

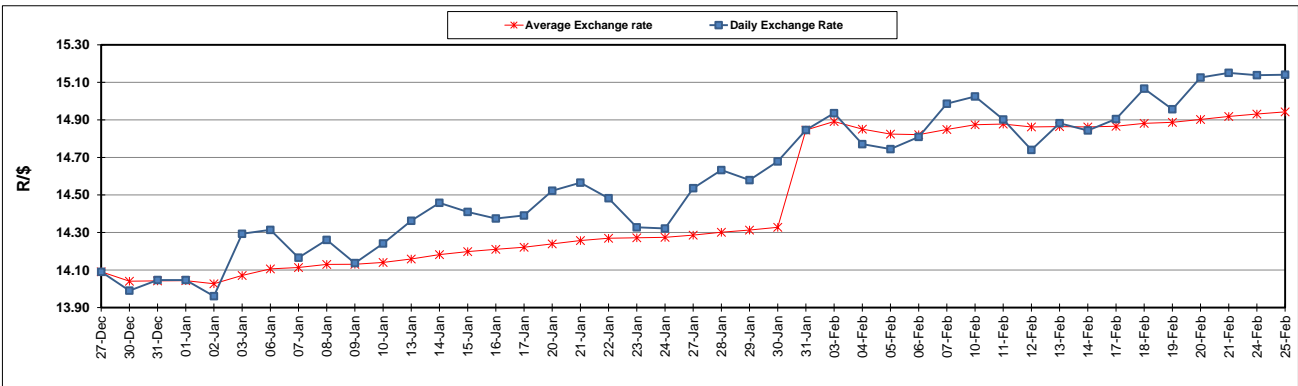
	PETROL 95 ULP	PETROL 93 ULP & LRP	DIESEL 0.05%	DIESEL 0.005%	ILL. PAR.
GAUTENG PUMP PRICE (SA c/l) AS FROM 05/02/2020	1,603.000	1,571.000	-	-	-
WHOLESALE PRICE (SA c/l) AS FROM 05/02/2020	-	-	1,457.260	1,462.660	924.728
SINGLE NATIONAL MAXIMUM RETAIL PRICE	-	-	-	-	1,176.000
BASIC FUEL PRICE - 25/02/2020 (SA c/l)	671.179	660.920	674.220	677.830	659.852
PRESS RELEASE CONTRIBUTION TO BFP 05/02/2020 - 25/02/2020 (SA c/l)	686.970	664.970	737.630	743.030	734.128
UNIT OVER/(UNDER) RECOVERY - 25/02/2020 (SA c/l)	15.791	4.050	63.410	65.200	74.276
AVERAGE BASIC FUEL PRICE 31/01/2020 - 25/02/2020	674.035	662.161	688.255	693.739	671.416
AVERAGE UNIT OVER/(UNDER) RECOVERY 31/01/2020 - 25/02/2020	15.102	4.976	50.208	50.125	63.212

ANALYSIS MOVEMENT OF AVERAGE OVER/(UNDER) RECOVERY

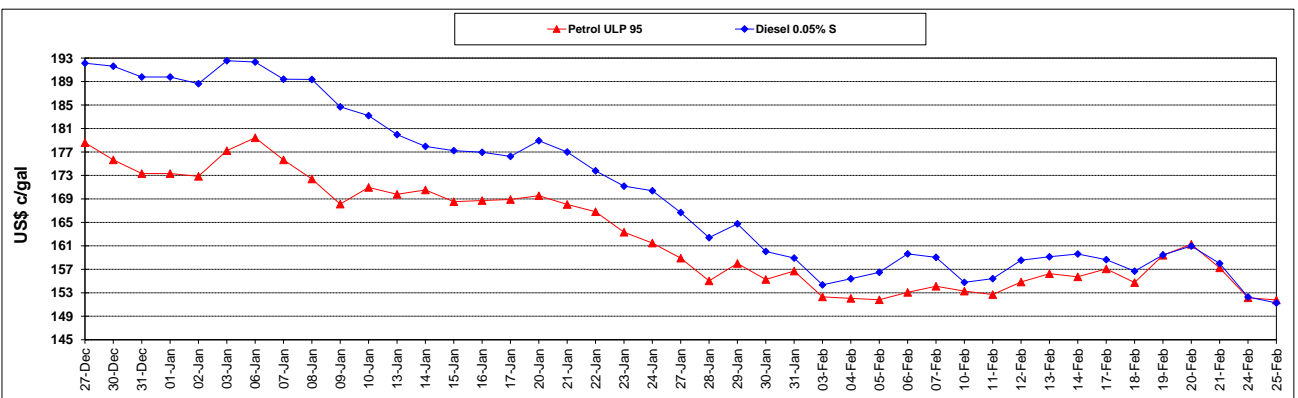
	PETROL 95	PETROL 93	DIESEL 0.05%	DIESEL 0.005%	ILL. PAR.
- MOVEMENT IN INTERNATIONAL PRODUCT PRICES	42.852	32.237	78.544	78.685	90.854
- MOVEMENT IN EXCHANGE RATE	(27.750)	(27.261)	(28.336)	(28.561)	(27.642)
AVERAGE UNIT OVER/(UNDER) RECOVERY 31/01/2020 - 25/02/2020	15.102	4.976	50.208	50.125	63.212

R/\$ EXCHANGE RATE - (R/\$15.1409 - 25/02/2020)

EXCHANGE RATE USED IN BASIC FUEL PRICE



INTERNATIONAL PRODUCT PRICES OF BASKET USED IN BASIC FUEL PRICE



BASIC FUEL PRICE IN SA CENTS PER LITRE

